



SpanSet®

01

Height Safety
Lifting
Load Control
Safety Management

**SPANSET XTIRPA
CONFINED SPACE
FALL ARREST AND
RESCUE SYSTEMS**

SPANSET XTIRPA CONFINED SPACE FALL ARREST AND RESCUE SYSTEMS



SpanSet is here for you:

Switzerland, Australia, Austria, Brazil, China, France, Germany, Hungary, UK, Indonesia, Italy, Poland, Spain, Taiwan, USA.



Subject to technical alterations. All rights reserved. No part of this catalogue may be reproduced or processed, duplicated or distributed using electronic systems in any form (print, photocopy, microfilm or any other procedure) without the written approval of the SpanSet company. This catalogue has been prepared with all due care; SpanSet accepts no liability for errors or omissions. © 2015 by SpanSet Australia Ltd

Contents

Features and Benefits of the SpanSet Xtirpa System	4
Portable Manhole Guard Davit System	6-9
Tow Bar Hitch Davit Systems	10-15
H-Base Davit System	16-17
Fixed Davit Systems	18-23
Low Clearance Integrated Masr and Davit Arm	18
600mm Davit Mast and Base Kit	18-19
1200mm Davit Mast and Base Kit	20-21
2400mm Davit Mast and Base Kit	22-23
Counterweight System	24-25
Accessories	26-35
Manhole Ladder Extension	26
Manhole Adaptable Hand Rail	26
Davit System Adapters	29-29
SRL and Winch Adapters	30
Pole Hoist System	31
Fall Arrest and Retrieval Manhole Collar Options	32
Multi-Functional Barricade	33
Ratchet Action Manhole Cover Lifter	34
Carry Bags and Trolley	35
Access and Rescue Equipment	36-41
WaterWorks Harnesses	36-38
Spreader Bar	39
Saverline 15m 3-Way Retracting Lifeline	39
Personnel Winch	39
Heavy Duty Tripod	40
4000 Pulley System	41

SPANSET XTIRPA CONFINED SPACE FALL ARREST AND RESCUE SYSTEMS

Features and Benefits

- Portable Manhole Guard Davit System
- Tow Bar Hitch Davit Systems
- H-Base Davit System
- Fixed Davits
- Counterweight System
- Accessories
- Access and Rescue Equipment



Features and Benefits of the SpanSet Xtirpa System



Innovative Design

The only patented system on the market that will allow you to install a davit arm on a manhole guard for rescue purposes.

Lightweight

- Manhold guard
- Davit arm 10.5kg
- Davit mast 10kg.

Using an aluminium composite (Duralcan®), the system has a maximum safe working load of 190.5kg

Ergonomic Design

The system can be easily transported and installed by one person. Set up is safe, easy and can be done in minutes.

More Versatile

The system is designed for multiple use, using different combinations of components to adapt for use in most kinds of confined spaces.

Easy Storage

No vehicle modifications are required and as the units are so compact they don't take up much storage space.

Cost Effective

The system's universality will save inventory costs, and as it reduces the incidence of back, shoulder and elbow injuries it will reduce pay outs on worker's compensation and time away from the workplace.

Built to Last

The aluminium composite used to build the system is highly corrosion resistant and has been independently tested.

Higher Rates of Compliance to Safety Regulations

Owing to the system's simple, safe and quick installation, employers will be able to implement safe working practices easily.

Patents

- European - 1490287
- United States - 7213715
- Canadian - 2479513
- Other patents pending.

Compliance

- Meets or exceeds applicable ANSI, OSHA, CSST and CE Standards.



SPANSET XTIRPA CONFINED SPACE FALL ARREST AND RESCUE SYSTEMS

Features and Benefits

Portable Manhole Guard Davit System

Tow Bar Hitch Davit Systems

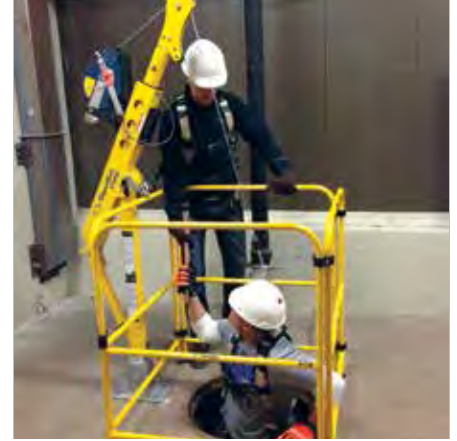
H-Base Davit System

Fixed Davits

Counterweight System

Accessories

Access and Rescue Equipment



Portable Manhole Guard Davit System

These portable manhole guards have an integrated mast which, used in conjunction with a davit arm SPXTIN2210, transforms these systems into confined space fall protection and retrieval systems.

These systems will facilitate your access to underground chambers or any other type of confined space where a portable manhole guard is needed.

With a capacity of 191kg (safety factor 10:1) this systems meets or exceeds CSA, ANSI, OSHA, CSST and CE Standards.

Fall Protection and Retrieval Davit Arm with Secondary Block

The fall protection and retrieval davit arm with secondary block will facilitate your access to underground chambers and any other confined space. Light, reliable and easy to install, this versatile davit arm can be used not only with the Portable Manhole Guard but also with the Tow Bar Hitch System, the H-Base System and the Mast Systems.

Its weight of only 15kg provides a capacity of 163kg when used with a Mast System, and a capacity of 191kg when used with the Manhole Guard System. With a 10:1 safety factor it is also equipped with a required 2,268kg anchor point requested by safety regulations and meets or exceeds CSA, ANSI, OSHA, CSST and CE Standards.

The system is infinitely expandable with the addition of extra barricade sections.

SPXTIN2108 - 1060mm Portable Manhole Guard



SPXT2 Portable Manhole Guard Davit System (SPXT3 with Stabiliser)

SPANSET XTIRPA CONFINED SPACE FALL ARREST AND RESCUE SYSTEMS

Features and Benefits

Portable Manhole Guard Davit System

Tow Bar Hitch Davit Systems

H-Base Davit System

Fixed Davits

Counterweight System

Accessories

Access and Rescue Equipment



Portable Manhole Guard Davit System



SPXTIN2210 - Davit Arm

SPXTIN2108 Manhole Guard

Maximum Working Load with Davit Arm SPXTIN2210	191kg
Maximum Capacity at Anchorage Point	22.2kN
Weight	13kg
Corner Mast Length	113.7cm
Height	105.7cm
Length	98cm
Depth	99.1cm
Structural Tubes	Duralcan Aluminium
Levelling Screws	Stainless Steel Rubber
Hardware	Zinc Plated Steel
Finish	Security Yellow

SPXTIN2210 Davit Arm

Working Load Mass with Manhole Guard SPXTIN2108	191kg
Maximum Capacity with Lifeline Winch & Barricade - Position 1 and 2	19kN
Maximum Capacity with Material Handling - Position 3	9.5kN
Maximum Capacity at Anchorage Point	22kN
Weight	15kg
Length When Opened	203cm
Length When Closed	132cm
Extension and Guide Tubes	Aluminium
Davit Arm Link	Aluminium
Anchorage Hooks	Stainless Steel
Hardware	Zinc Plated Steel
Guide Tube Sliders	Ultra High Molecular-weight Polyethylene
Pulley	Black Acetal
Finish	Security Yellow

SPANSET XTIRPA CONFINED SPACE FALL ARREST AND RESCUE SYSTEMS

Features and Benefits

Portable Manhole Guard Davit System

Tow Bar Hitch Davit Systems

H-Base Davit System

Fixed Davits

Counterweight System

Accessories

Access and Rescue Equipment



Portable Manhole Guard Davit System

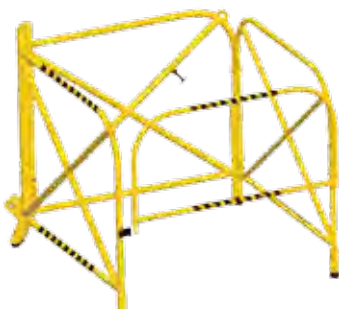


SPXTIN2108-18 - Stabiliser for 1060mm Portable Manhole Guard

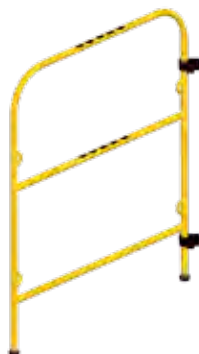


SPXTIN52 - Manhole Guard Repositioning Wheels

Also Available:



SPXTIN2001 - 875mm Portable Manhole Guard



SPXTA2101-04 - Multi-function barricade extension



SPXTA2001-18 - Spiked Manhole Guard Feet
SPXTA2001-28 - Large Rubber Feet for Manhole Guard

SPXTIN2108-18 1060mm Stabiliser

Weight	2kg
Height	46.6cm
Width	52.1cm
Depth	37.4cm
Structural Tubes	Duralcan Aluminium
Levelling Screws	Stainless Steel Rubber
Hardware	Zinc Plated Steel
Finish	Security Yellow

SPXTIN52 - Repositioning Wheels

Weight	17.5kg
Height	500mm
Width	650mm
Depth	700mm
Structural Tubes	Rectangular Sectioned Steel
Wheels	Ball Bearing No-Flat Rubber
Finish	Black Powder Coated



DANGER

Confined Space
Entry by Permit
Only

SPANSET XTIRPA CONFINED SPACE FALL ARREST AND RESCUE SYSTEMS

Features and Benefits

Portable Manhole Guard Davit System

Tow Bar Hitch Davit Systems

H-Base Davit System

Fixed Davits

Counterweight System

Accessories

Access and Rescue Equipment



600mm Tow Bar Hitch Davit System



The most versatile system on the market, the Tow Bar Hitch Mount connects to most 50mm square vehicle receiver hitches, our most popular system offers adjustable screw pads for easy levelling.

This system uses the same davit arm as the Manhole Guard Davit System (SPXTIN2210) and gives a maximum capacity of 164kg and has a safety factor of 10:1 and meets or exceeds CSA, ANSI, OSHA, CSST and CE Standards.

SPXTIN2126 - Trailer Hitch Mount



SPXT6 - Tow Bar Hitch Davit System

SPANSET XTIRPA CONFINED SPACE FALL ARREST AND RESCUE SYSTEMS

Features and Benefits

Portable Manhole Guard Davit System

Tow Bar Hitch Davit Systems

H-Base Davit System

Fixed Davits

Counterweight System

Accessories

Access and Rescue Equipment



Tow Bar Hitch Davit System

SPXTIN2210 Davit Arm

See Portable Manhole Guard Davit System for specifications

SPXTIN2003 Mast

Working Load Mass with Davit Arm SPXTIN2210	164kg
Maximum Capacity with Davit Arm SPXTIN2210	16kN
Weight	10kg
Mast Material	Aluminium
Anchorage Plates	Aluminium
Finish	Security Yellow

SPXTIN2126 Tow Bar Hitch Mount

Working Load Mass with Mast SPXTIN2003 and Davit Arm SPXTIN2210	164kg
Maximum Capacity with Mast and Davit Arm SPXTIN2210	16kN
Hitch Vehicle Minimum Weight	2727kg
Weight	14kg
Extensions	Aluminium
Mast Sleeve	Aluminium
Extension Sliders	Black Delrin
Positioning Levels and Hardware	Zinc Plated Steel
Positioning Pads	Aluminium
Finish	Security Yellow



SPXTIN2003 - Davit Mast

SPANSET XTIRPA CONFINED SPACE FALL ARREST AND RESCUE SYSTEMS

Features and Benefits

Portable Manhole Guard Davit System

Tow Bar Hitch Davit Systems

H-Base Davit System

Fixed Davits

Counterweight System

Accessories

Access and Rescue Equipment



600mm Tow Bar Hitch Davit System



SPXTIN2210 - Davit Arm

SPXTIN2210 Davit Arm

See Portable Manhole Guard Davit System for details

SPXTA2126-21 Anchor Bolt Adaptor

Maximum Capacity	164kg
Maximum Working Moment	0.95kN/m
Maximum Moment	0.95kN/m
Weight	15kg
Principal Body and Guide	Zinc Plated Stainless Steel
Hardware	Steel
Plate Support	Steel

SPXTA2126-21 - Anchor Bolt Adaptor for Trailer Hitch Mount



SPXTA2126-07 - Universal Joint for Trailer Hitch Mount



SPANSET XTIRPA CONFINED SPACE FALL ARREST AND RESCUE SYSTEMS

- Features and Benefits
- Portable Manhole Guard Davit System
- Tow Bar Hitch Davit Systems**
- H-Base Davit System
- Fixed Davits
- Counterweight System
- Accessories
- Access and Rescue Equipment



SPXTA2126-10 90° Extension

Weight	29kg
Length	132cm
Working Height	35.6cm
Width	5.1cm ²
Material	Steel
Finish	Security Yellow

SPXTA2126-09 Straight Extension

Weight	14kg
Length	193.7cm
Width	5.1cm ²
Material	Steel

SPXTA2126-07 Universal Joint

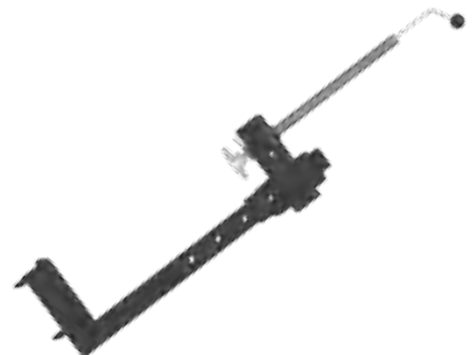
Weight	3.6kg
Length	28.5cm
Width	5.08cm ²
Material	Steel



SPXTA2126-10 - 90 Degree Extension for Trailer Hitch Mount



SPXTA2126-09 - 6ft (183cm) Extension for Trailer Hitch Mount



SPXTIN2126-14 - C Clamp Adapter for Trailer Hitch Mount

SPANSET XTIRPA CONFINED SPACE FALL ARREST AND RESCUE SYSTEMS

- Features and Benefits
- Portable Manhole Guard Davit System
- Tow Bar Hitch Davit System**
- H-Base Davit Systems
- Fixed Davits
- Counterweight System
- Accessories
- Access and Rescue Equipment



1200mm Tow Bar Hitch Davit System



SPXTA2305-20 - T-Base Mount Reducer

SPXTA2305-25 - Counterweight Adapter for 1830mm Extension

SPXTA2305-16 - T-Base Mount Extension 1830mm

SPXTIN2237 - Extendable Arm for 1200mm Davit

SPANSET XTIRPA CONFINED SPACE FALL ARREST AND RESCUE SYSTEMS

Features and Benefits
 Portable Manhole Guard Davit System
Tow Bar Hitch Davit System
 H-Base Davit Systems
 Fixed Davits
 Counterweight System
 Accessories
 Access and Rescue Equipment



SPXTIN2305 Universal T-Base

Working Load Mass with Mast SPXTIN2240 and Davit Arm SPXTIN2237	164kg
Maximum Capacity with Mast SPXTIN2240 and Davit Arm SPXTIN2237	16kN
Hitch Vehicle Minimum Weight	2727kg
Weight	33kg
Extensions	Aluminium
Mast Sleeve	Aluminium
Extension Sliders	Black Delrin
Positioning Levels and Hardware	Zinc Plated Steel
Positioning Pads	Aluminium
Finish	Security Yellow

SPXTIN2240 Mast

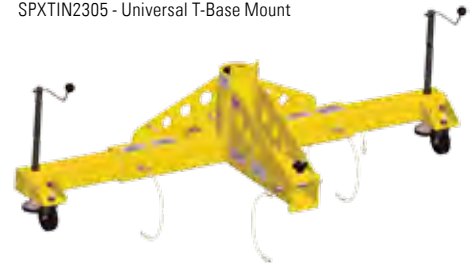
Maximum Working Load with Davit Arm SPXTIN2237	164kg
Maximum Capacity with Davit Arm SPXTIN2237	16kN
Weight	11kg
Mast	Aluminium
Handle	Aluminium
Finish	Security Yellow

SPXTIN2237 1200mm Davit Arm

Maximum Working Load with Mast SPXTIN2240	164kg
Maximum Capacity with Mast SPXTIN2240	16kN
Maximum Capacity at Anchor Point	22kN
Weight	16kg
Extension and Guide Tubes	Aluminium
Anchorage Hooks	Stainless Steel
Hardware	Zinc Plated Stainless Steel
Guide Tube Sliders	Ultra High Molecular-weight Polyethylene
Pulley	Black Acetal
Finish	Security Yellow

1200mm Tow Bar Hitch Davit System

SPXTIN2305 - Universal T-Base Mount



SPXTIN2240 - Davit Mast



SPANSET XTIRPA CONFINED SPACE FALL ARREST AND RESCUE SYSTEMS

Features and Benefits

- Portable Manhole Guard Davit System
- Tow Bar Hitch Davit Systems

H-Base Davit System

- Fixed Davits
- Counterweight System
- Accessories
- Access and Rescue Equipment



H-Base Davit System

This three-piece hoist system was designed to be used in conjunction with the davit arm SPXTIN2210 and the mast SPXTIN2003 that are common to the three davit systems. The portable lower base with adjustable feet to fit most standard confined spaces. It offers a solution for the entry, rescue and positioning of personnel.

The combination of davit arm and mast allows the operator to pivot the system for easier and safer rescue. Durable and versatile, the system has a capacity of 164kg and has a safety factor of 10:1 and meets or exceeds CSA, ANSI, OSHA, CSST and CE Standards.

SPXTIN2210 Davit Arm

See Tow Bar Hitch Davit System for specifications

SPXTIN2003 Mast

See Tow Bar Hitch Davit System for specifications

SPXTIN2118 H-Base

Maximum Working Load with Mast and Davit Arm SPXTIN2210	164kg
Maximum Capacity with Mast and Davit Arm	16kN
Weight	36.82kg
Extensions	Aluminium
Mast Sleeve	Aluminium
Suspension and Anchor Points	Aluminium
Extension Sliders	PVC Pipe
Positioning Levels and Hardware	Zinc Plated Stainless Steel
Positioning Pads	Aluminium
Finish	Security Yellow



SPXTIN2003 - Davit Mast



SPXTIN2210 - Davit Arm

SPANSET XTIRPA CONFINED SPACE FALL ARREST AND RESCUE SYSTEMS

Features and Benefits

Portable Manhole Guard Davit System

Tow Bar Hitch Davit Systems

H-Base Davit System

Fixed Davits

Counterweight System

Accessories

Access and Rescue Equipment



H-Base Davit System

SPXTIN2118 - H-Base



SPXT5 - H-Base Davit System



SPANSET XTIRPA CONFINED SPACE FALL ARREST AND RESCUE SYSTEMS

Features and Benefits

- Portable Manhole Guard Davit System
- Tow Bar Hitch Davit Systems
- H-Base Davit System

Fixed Davits

- Counterweight System
- Accessories
- Access and Rescue Equipment



Low Clearance Integrated Mast and Davit Arm

This low clearance davit with an integrated mast and davit arm is designed for use in any of the 610mm adapter bases. Ideal for when a shorter clearance is required. The unit weighs 7kg and has a weight capacity of 163kg, is 915mm in height and has a 460mm reach.

SPXTIN2295 Low Clearance Mast and Davit



SPXTIN2363 Short Reach Mast and Davit

SpanSet Xtirpa Short Reach Mast and Davit Arm

Low clearance integrated mast and davit arm for use in any of the 610mm adapter bases when a shorter clearance is needed. The unit weighs 7kg, is 915mm high and has a 229mm reach.

600mm Davit Mast and Base Kit

This unique, adjustable davit system was developed to allow workers greater versatility, with the mast adapter permanently fixed to a structure and the davit arm and mast moved around as required. Ensuring easy and safe access into a wide variety of confined spaces this davit is easily positioned from 380mm,

450mm and 600mm. The davit's versatility offers a solution where other conventional systems are impractical.

With a safety factor of 10:1 the davit meets or exceeds CSA, ANSI, OSHA, CSST and CE Standards.

Code	Description	Min Reach	Max Reach	Max Height
SPXT24	600mm Davit, Mast and Base kit	385mm	601mm	2992mm
SPXTIN2210	600mm Davit Arm	–	–	–
SPXTIN2003	Standard Mast	–	–	–
SPXTIN2044	380mm Mast Extension	–	–	3372mm
SPXTIN2109	450mm Mast Extension	–	–	3442mm
SPXTIN2045	600mm Mast Extension	–	–	3592mm
SPXTIN2005	Stainless Steel Floor Adapter	–	–	–

SPXTIN2210 Davit Arm

See Tow Bar Hitch Davit System for details

SPXTIN2003 Mast

See Tow Bar Hitch Davit System for details

SPANSET XTIRPA CONFINED SPACE FALL ARREST AND RESCUE SYSTEMS

Features and Benefits

- Portable Manhole Guard Davit System
- Tow Bar Hitch Davit Systems
- H-Base Davit System

Fixed Davits

- Counterweight System
- Accessories
- Access and Rescue Equipment



600mm Davit Mast and Base Kit

SPXT24 - 600mm [24"] Davit System



SPXTIN2005 Stainless Steel Floor Adapter

Maximum Working Moment	0.97kN
Maximum Moment	13.5kN
Weight	10kg
Plate and Gussets	Stainless Steel
Sleeve	Stainless Steel
Sleeve Bearing	Acetal Black Delrin
Pin	Zinc Plated Stainless Steel
Lanyard	Nylon Covered Steel Cable

SPXTIN2044 380mm/450mm/600mm Mast Extensions

Maximum Working Load with Davit Arm SPXTIN2210	164kg
Maximum Capacity with Davit Arm SPXTIN2210	16kN
Weights	9kg/11kg/12kg
Cylinder and Sleeve	Steel DOM 1026
Pin	Zinc Plated Stainless Steel
Lanyard	Nylon Covered Steel Cable
Finish	Security Yellow



SPXTIN2045 - 600mm Mast Extension



SPXTIN2005 - Stainless Steel Floor Adapter

SPANSET XTIRPA CONFINED SPACE FALL ARREST AND RESCUE SYSTEMS

Features and Benefits

- Portable Manhole Guard Davit System
- Tow Bar Hitch Davit Systems
- H-Base Davit System

Fixed Davits

- Counterweight System
- Accessories
- Access and Rescue Equipment



1200mm Davit Mast and Base Kit

This unique, adjustable davit system was developed to allow workers greater versatility, with the mast adapter permanently fixed to a structure and the davit arm and mast moved around as required.

Ensuring easy and safe access into a wide variety of confined spaces this davit is easily positioned from 775mm, 915mm and 1200mm. The davit's versatility offers a solution where other conventional systems are impractical.

With a safety factor of 10:1 the davit meets or exceeds CSA, ANSI, OSHA, CSST and CE Standards.



SPXTIN2240 - Davit Mast

Code	Description	Min Reach	Max Reach	Max Height
SPXT48	1200mm Davit, Mast and Base Kit	775mm	1200mm	2224mm
SPXTIN2237	1200mm Davit Arm	–	–	–
SPXTIN2240	Mast	–	–	–
SPXTIN2238	Stainless Steel Floor Adapter	–	–	–
SPXTIN2238	Stainless Steel Floor Adapter	–	–	–

SPXTIN2237 1200mm Davit Arm

Maximum Working Load with Mast SPXTIN2240	164kg
Maximum Capacity with Mast SPXTIN2240	16kN
Maximum Capacity at Anchor Point	22kN
Weight	22.5kg
Extension and Guide Tubes	Aluminium
Anchorage Hooks	Stainless Steel
Hardware	Zinc Plated Stainless Steel
Guide Tube Sliders	Ultra High Molecular-weight Polyethylene
Pulley	Black Acetal
Finish	Security Yellow

SPXTIN2240 Mast

Maximum Working Load with Davit Arm SPXTIN2237	164kg
Maximum Capacity with Davit Arm SPXTIN2237	16kN
Weight	11kg
Mast	Aluminium
Handle	Aluminium
Finish	Security Yellow

SPANSET XTIRPA CONFINED SPACE FALL ARREST AND RESCUE SYSTEMS

Features and Benefits

Portable Manhole Guard Davit System

Tow Bar Hitch Davit Systems

H-Base Davit System

Fixed Davits

Counterweight System

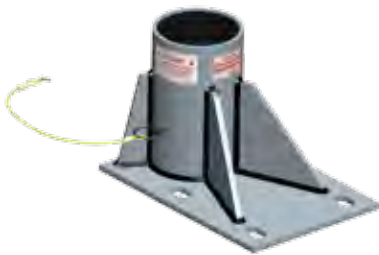
Accessories

Access and Rescue Equipment



1200mm Davit Mast and Base Kit

SPXTIN2238 - 102mm Floor Adapter



SPXT48 - Mast and Base Kit



SPXTIN2237 - Extendable Davit Arm

SPXTIN2238 Stainless Steel Floor Adapter

Maximum Working Moment	1.9kN
Maximum Moment	19.5kN
Weight	16kg
Plate and Gussets	Stainless Steel
Sleeve	Stainless Steel
Sleeve Bearing	Acetal Black Delrin
Pin	Zinc Plated Stainless Steel
Lanyard	Nylon Covered Steel Cable

SPANSET XTIRPA CONFINED SPACE FALL ARREST AND RESCUE SYSTEMS

Features and Benefits

Portable Manhole Guard Davit System

Tow Bar Hitch Davit Systems

H-Base Davit System

Fixed Davits

Counterweight System

Accessories

Access and Rescue Equipment



2400mm Davit Mast and Base Kit

This unique, adjustable davit system was developed to allow workers greater versatility, with the mast adapter permanently fixed to a structure and the davit arm and mast moved around as required.

Ensuring easy and safe access into a wide variety of confined spaces this davit is easily positioned from 1525mm to 2430mm. The davit's versatility offers a solution where other conventional systems are impractical.

With a safety factor of 10:1 the davit meets or exceeds CSA, ANSI, OSHA, CSST and CE Standards.

Code	Description	Min Reach	Max Reach	Max Height
SPXT96	2400mm Davit, Mast and Base Kit	1525mm	2430mm	2785mm
SPXTIN2197	2400mm Davit Arm	–	–	–
SPXTIN2199	Mast	–	–	–
SPXTIN2201	Stainless Steel Floor Adapter	–	–	–
SPXTIN2238	Stainless Steel Floor Adapter	–	–	–

SPXTIN2197 - 2400mm Davit Arm



SPXTIN2197 Davit Arm

Maximum Working Load with Winch and Mast SPXTIN2199 Position 1 or 2	164kg
Maximum Capacity Material Handling with Mast SPXTIN2199 Position 1 or 2	16kN
Maximum Capacity at Anchor Point	22kN
Weight	63kg
Length When Opened	203cm
Length When Closed	132cm
Extension and Guide Tubes	Aluminium
Davit Arm Link	Aluminium
Anchorage Hooks	Stainless Steel
Hardware	Zinc Plated Steel
Guide Tube Sliders	Ultra High Molecular-weight Polyethylene
Pulley	Black Acetal
Finish	Security Yellow

SPANSET XTIRPA CONFINED SPACE FALL ARREST AND RESCUE SYSTEMS

Features and Benefits

- Portable Manhole Guard Davit System
- Tow Bar Hitch Davit Systems
- H-Base Davit System

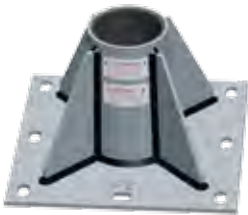
Fixed Davits

- Counterweight System
- Accessories
- Access and Rescue Equipment

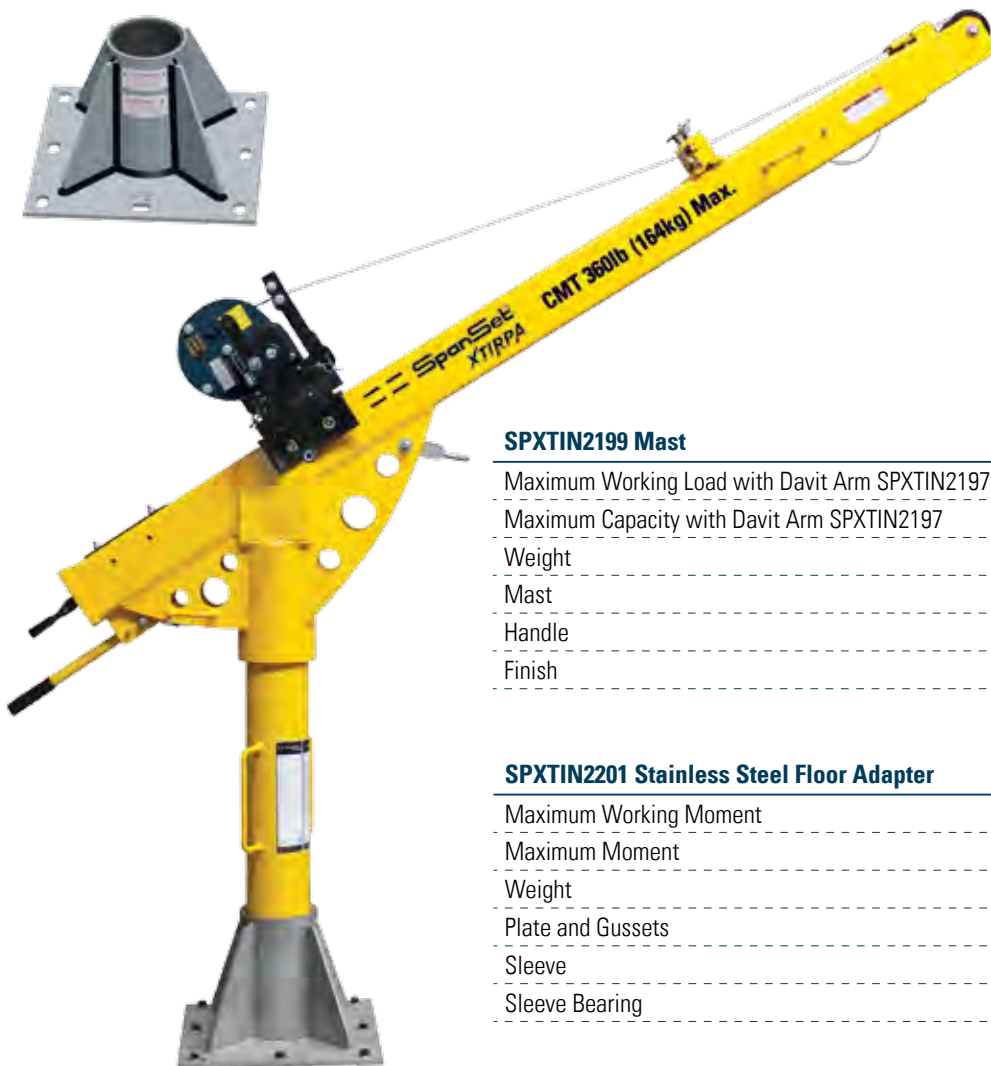


2400mm Davit Mast and Base Kit

SPXTIN2201 - 2400mm Floor Mount Adapter



SPXTIN2199 - Davit Mast



SPXTIN2199 Mast

Maximum Working Load with Davit Arm SPXTIN2197	164kg
Maximum Capacity with Davit Arm SPXTIN2197	16kN
Weight	15.5kg
Mast	Aluminium
Handle	Aluminium
Finish	Security Yellow

SPXTIN2201 Stainless Steel Floor Adapter

Maximum Working Moment	3.9kN
Maximum Moment	39kN
Weight	30kg
Plate and Gussets	Stainless Steel
Sleeve	Stainless Steel
Sleeve Bearing	PVC Pipe

SPANSET XTIRPA CONFINED SPACE FALL ARREST AND RESCUE SYSTEMS

Features and Benefits

Portable Manhole Guard Davit System

Tow Bar Hitch Davit Systems

H-Base Davit System

Fixed Davits

Counterweight System

Accessories

Access and Rescue Equipment



Counterweight System

This counterweight system is designed for multiple confined space access in the same area where the extra reach of the 1200mm davit arm is required. Additionally, it can be used in areas where a fixed base is not possible.

The system consists of a central unit to which a number of optional equipment can be added, including extensions, leg adjustment and anchoring options.

With a weight capacity of 163kg this system can be used in conjunction with a counterbalancing weight rack or a wheel pad assembly when using a vehicle. The davit arm has a 2270kg anchor point.

SPXTIN2237 - Extendable Arm for 1200mm Davit



SPXTIN2240 - Davit Mast for 1200mm Davit
1070mm Height

SPXTIN2313 - Davit Mast for 1200mm Davit
1070mm Height



SPXTA2237-06 - Removable Adapter for Positioning Winch

SPANSET XTIRPA CONFINED SPACE FALL ARREST AND RESCUE SYSTEMS

Features and Benefits

Portable Manhole Guard Davit System

Tow Bar Hitch Davit Systems

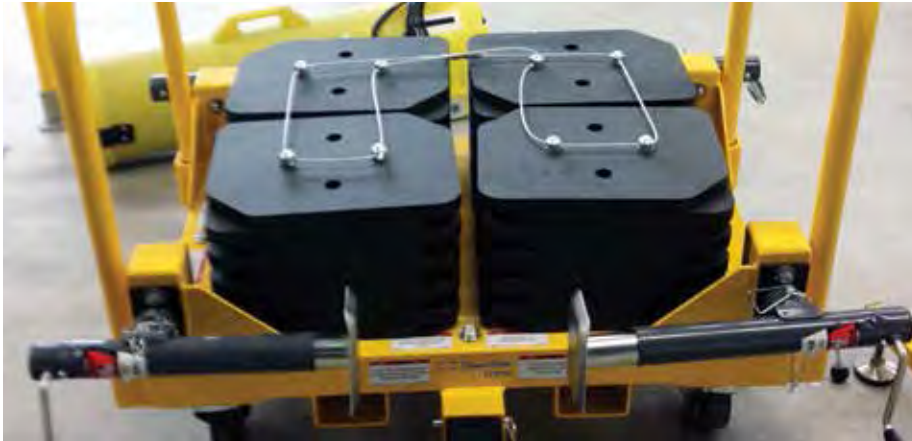
H-Base Davit System

Fixed Davits

Counterweight System

Accessories

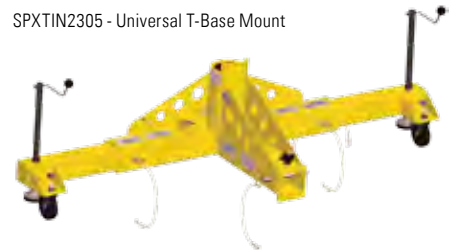
Access and Rescue Equipment



Counterweight System

Required Components

SPXTIN2305 - Universal T-Base Mount



SPXTA2305-27 - Counterweight Base



SPXTP2305-16n - 23kg Counterweight Weight Plates



SPXTA2305-23 Counterweight Base Extension Tube



Optional Accessories

SPXTA2305-25 - Counterweight Adapter for 1830mm Extension



SPXTA2305 Water Counterweight



SPXTA2305-16 - T-Base Mount Extension 1830mm

